



**Delivering Life-changing Value as a GSP**

**Kyowa Kirin Co., Ltd.**  
Corporate Profile

GSP: Global Speciality Pharmaceutical Company



# What we stand for

In February 2021, Kyowa Kirin launched its FY2021-2025 Medium-term Business Plan, which is aimed at realizing our new vision for the Group by 2030. Guided by the vision and the business plan, we aim to create social and economic value with medicines that make patients smile by feeling dramatic improvements in quality of life. Unified by a deep commitment to this vision, every employee in the Group will continue working to fulfill the expectations of all stakeholders.

## Our Philosophy

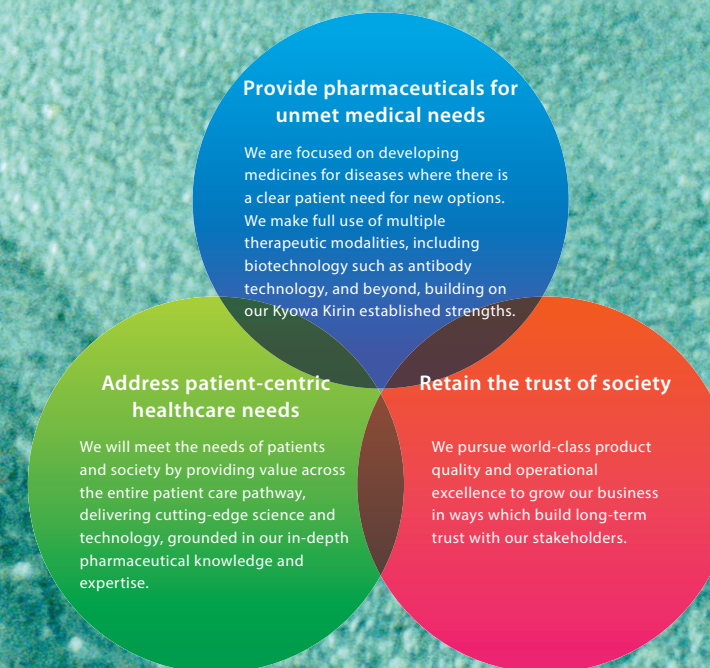
The Kyowa Kirin Group companies strive to contribute to the health and well-being of people around the world by creating new value through the pursuit of advances in life sciences and technologies.

## Core Values



## Vision

Kyowa Kirin will realize the successful creation and delivery of life-changing value that ultimately makes people smile, as a Japan-based Global Specialty Pharmaceutical company built on the diverse team of experts with shared passion for innovation.



## Contents

What we stand for.....	P.1
Life-changing technology .....	P.2
Life-changing throughout the world.....	P.4
What makes things life-changing .....	P.6
Creating Shared Value .....	P.8
Corporate Data.....	P.9



# Life-changing technology

Kyowa Kirin is focusing on addressing patient-centric healthcare needs. We aim to satisfy unmet medical needs of patients that do not have access to effective treatments by harnessing open innovation to maximize our antibody technology and by using other innovative technologies and our long-established strengths in disease expertise.

We will consistently create life-changing & Only-one value that makes patients smile.

We aim to create life-changing value by selecting efficient drug discovery targets using our platform of revolutionary proprietary technologies and through open innovation with partners that possess distinctive strengths.

## Research & development concept

### Advanced technology platform

We will continue to evolve our antibody technology, while also pursuing the possibilities of other modalities and building a platform that leads to innovative new therapies.

Antibody

Small molecule

Nucleic acid

Regenerative

### Target disease biology

Continue to provide Only-one value drugs for unmet medical needs, while utilizing the Group's long-standing disease science of nephrology, oncology, immunology and allergy, and central nervous system fields.

Nephrology

Oncology

Immunology/Allergy

Central Nervous System

### Open Innovation (OI)

Continue to work on collaborative research activities<sup>\*1</sup> with academia, startups and other partners, combine with rapid access to information gained from investment in Venture Capital funds<sup>\*2</sup>, and tap into external innovation through advanced Open Innovation activities

<sup>\*1</sup> Reenergize the San Diego research base <sup>\*2</sup> Examine the feasibility of establishing a corporate venture capital (CVC) fund.

Create life-changing value with clear competitive advantages





**Life-changing  
throughout  
the world**

We are extending our global reach to provide products for unmet medical needs worldwide.

## Maximize the Value of Global Three Brands (G3B)



### Maximize the value of three global products

Crysvita		Establish Crysvita as the standard treatment for XLH / unresectable TIO and contribute as a global leader in these therapeutic areas through the sustainable growth of the product.
Poteligeo		In the global market, clarify the importance of treatment for early-stage CTCL patients and contribute through disease control and improvement of quality of life in Japan, establish its importance as a treatment for ATL.
Nourias/Nourianz		Collect clinical evidence, establish treatment positioning and develop a standard of care worldwide for wearing-off management in combination with levodopa.



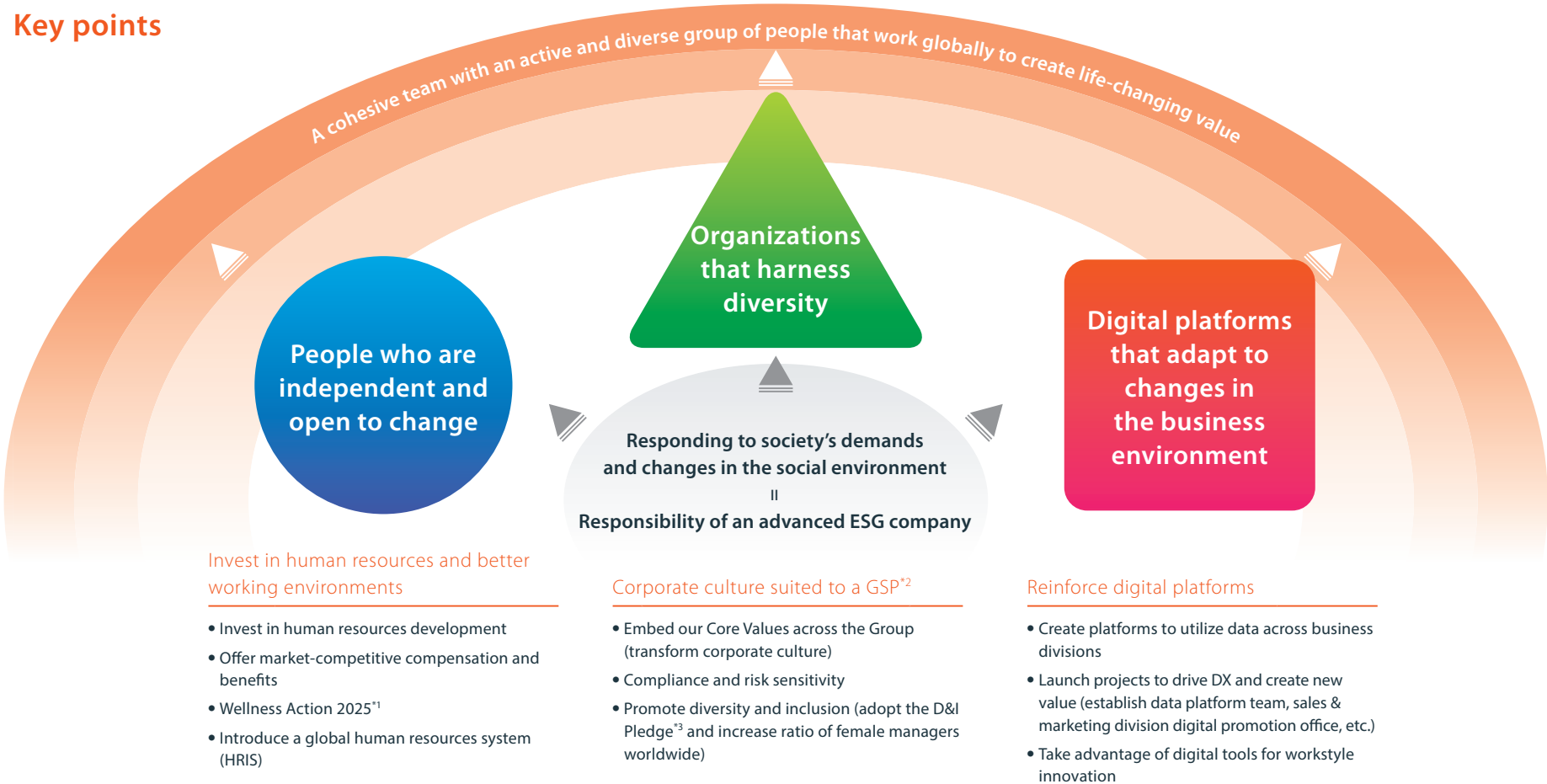


# What makes things life-changing

At Kyowa Kirin, we believe people are the origin of innovation. By cultivating employees who take the initiative and are open to change, we aim to build a diverse team of people with a shared passion for innovation to help us create life-changing value.

## Reinforce Human Resources and Structures that Support the Creation of Life-changing Value

### Key points



<sup>\*1</sup> Wellness Action 2025: Our plan to roll out health promotion activities worldwide to address the key issue of employee health as a pharmaceutical company  
<sup>\*2</sup> Global Specialty Pharmaceutical company <sup>\*3</sup> Diversity & Inclusion Pledge: Our commitment to internal and external stakeholders to promote diversity and inclusion

# Creating Shared Value

## Using CSV management to increase corporate value

The Kyowa Kirin Group is implementing CSV management to increase corporate value by balancing the “creation of economic value” with the “creation of social value” through initiatives that tackle social issues.

As part of CSV management, we have identified priority material issues that need to be addressed, based on their impact on the sustainability of society and on the Group’s business operations. These issues have been incorporated into the Medium-term Business Plan as materiality.

We believe our Medium-term Business Plan will also contribute to achieving the SDGs.

### Kyowa Kirin Group’s materiality

<div>Growth opportunities</div>	<b>Make as many people as possible smile</b> <ul style="list-style-type: none"><li>• Continuous innovation</li><li>• Patient support and advocacy</li><li>• Access to medicine</li></ul>	<b>Related SDGs</b> <div><div>3GOOD HEALTH AND WELL-BEING</div><div>9INDUSTRY, INNOVATION AND INFRASTRUCTURE</div><div>17PARTNERSHIPS FOR THE GOALS</div></div>
<div>Growth foundations</div>	<b>Foster even greater trust in Kyowa Kirin</b> <ul style="list-style-type: none"><li>• Corporate governance</li><li>• Provide high-quality, safe products and services</li><li>• Supply chain management</li><li>• Proper use of products</li><li>• Responsible marketing and advertising</li><li>• Responsible research and development</li><li>• Anti-counterfeiting</li><li>• Transparency and disclosure</li><li>• Legal compliance and ethical business practices</li><li>• Tax compliance</li><li>• Anti-bribery and corruption</li><li>• Privacy and information security</li><li>• Reinforce risk management</li><li>• Respecting human rights</li><li>• Stakeholder engagement</li></ul>	<div><div>10REDUCED INEQUALITIES</div><div>12RESPONSIBLE CONSUMPTION AND PRODUCTION</div><div>16PEACE, JUSTICE AND STRONG INSTITUTIONS</div></div>
<div>Organizational culture and talent</div>	<b>Create a unified team brimming with diversity</b> <ul style="list-style-type: none"><li>• Diversity and inclusion</li><li>• Occupational health and safety</li><li>• Employee development and opportunities for employees to grow</li></ul>	<div><div>5GENDER EQUALITY</div><div>8DECENT WORK AND ECONOMIC GROWTH</div></div>
<div>Social foundations</div>	<b>Ensure a thriving global environment for future generations</b> <ul style="list-style-type: none"><li>• Climate change</li><li>• Biodiversity</li><li>• Reducing pollution</li><li>• Waste and resource use</li><li>• Water use</li><li>• Philanthropic activities</li><li>• Advancement of medical science</li></ul>	<div><div>4QUALITY EDUCATION</div><div>6CLEAN WATER AND SANITATION</div><div>7AFFORDABLE AND CLEAN ENERGY</div><div>13CLIMATE ACTION</div><div>15LIFE ON LAND</div><div>17PARTNERSHIPS FOR THE GOALS</div></div>

# Corporate Data

Company Name	Kyowa Kirin Co., Ltd.	Executive Director of the Board	President and Chief Executive Officer Masashi Miyamoto
Established	July 1, 1949	Head Office	1-9-2, Otemachi, Chiyoda-ku, Tokyo 100-0004, Japan TEL: +81-3-5205-7200
	* Date of establishment of former Kyowa Hakko Kogyo Co., Ltd. Company name changed from Kyowa Hakko Kogyo Co., Ltd. following merger with Kirin Pharma Company, Limited on October 1, 2008. * Company name changed to Kyowa Kirin Co., Ltd. on July 1, 2019.	Revenue (consolidated)	¥318,352 million (Fiscal Year ended December 31, 2020)
Capital	¥26,745 million (As of December 31, 2020)	Main Business	Pharmaceutical research, development, manufacture, sale, import and export, etc.
Number of Employees	5,423 (Consolidated basis, as of December 31, 2020)	Parent Company	Kirin Holdings Company, Limited

## Main Business Offices

Branches	Research Laboratories
Sapporo Branch	Tokyo Research Park
Tohoku Branch	Fuji Research Park
Tokyo Branch	Bio Process Research and Development Laboratories
Chiba-Saitama Branch	CMC R&D Center
Kita Kanto-Koshinetsu Branch	
Yokohama Branch	
Nagoya Branch	<b>Plants</b>
Osaka Branch	Takasaki Plant
Keiji-Hokuriku Branch	Ube Plant
Chugoku-Shikoku Branch	
Kyusyu Branch	

## Main Group Companies

Japan	
FUJIFILM KYOWA KIRIN BIOLOGICS Co., Ltd.	Kyowa Kirin Frontier Co., Ltd.
	Kyowa Kirin plus Co., Ltd.
Overseas	
Asia/Pacific	
Kyowa Kirin Asia Pacific Pte. Ltd.	<b>North America</b>
Kyowa Kirin China Pharmaceutical Co., Ltd.	Kyowa Kirin USA Holdings, Inc.
Kyowa Kirin Korea Co., Ltd.	Kyowa Kirin, Inc.
Kyowa Kirin Taiwan Co., Ltd.	BioWa, Inc.
	Kyowa Kirin Canada, Inc.
	<b>EMEA (Europe, Middle East, Africa)</b>
	Kyowa Kirin International plc

## Commitment to Life

Countless precious lives surround us.  
Brought into this world, blessed,  
raised with loving care – full of dreams, happiness as the goal of life.  
Deeply instill in us,  
Infinite possibilities for us, a pharmaceutical company.  
and know that what we work for – the most precious presence of all on this planet.

Believe in ourselves, believe in our power, believe in what we have built together.  
Not a large company, but with qualities like none other.  
History so unique we can be proud of, technology unmatched,  
And superior human beings that cannot be found elsewhere.

Be brave; do not shy away from challenges. Have passion; break away from the norm.  
Innovation is not just about growth – but instead a leap towards the future,  
a grand growth with wings.  
Wings never to be given to those who settle for the status-quo.

Don't just make medicine. Make people smile, bring light to their lives.  
How strongly one longs to live. How deeply one is loved by their loved ones.  
How sincerely one desires to help the one life  
they dedicate themselves to in the field of medicine.  
Stay receptive, sharpen your sensitivities.  
Let us become the top company in the world who cares the most for life.  
Strength is not what saves the world. A caring heart is what the world calls for.

Strive to become a superb team.  
One human being, excellent or not, is ever so powerless,  
as a power of one, mistakes, even a possibility.  
Show the world the excellence of coming together. Amazing results, when we become one.  
Be driven. Think of those fighting for their lives every day.  
Their strong devotion to life speaks to our hearts.  
Hurry – do not scurry, but we must not stand still. Stay sincere, always – may that be our vow.  
We make medicine. This is, our walk of life.

Work, can bring happiness. Remember this, always.  
Born on this planet in various parts of the globe, passing through life in different ways,  
And like a miracle we found one another – our jobs, our team, our company.  
Know this, and be fulfilled, always.  
Be thankful of what you have, pour your heart and soul into the mission you were given,  
Be proud of your work, the work to save precious lives.

We are, each and everyone of us, Kyowa Kirin.

## Taking the walk of life, one life at a time.